

LUPI PIETRE



## TRAVERTINE **BRONZE**

VEIN CUT / CROSS CUT

Bronze Travertine is characterized by a warm tone that ranges from hazelnut to lighter walnut. With excellent structural properties, it is suitable for various applications, including flooring, cladding, and solid design objects. When cross-cut, its veins exhibit a horizontal and parallel pattern with well-graded colors. The vein cut results in an even, cloud-like appearance with subtle tone-on-tone nuances. Bronze Travertine is often paired with lighter stones like Classic or Ivory Travertine, creating striking plays of light and color.

[www.lupipietre.com](http://www.lupipietre.com)



# LUPI PIETRE



## BRONZE TRAVERTINE

Vein cut

## BRONZE TRAVERTINE

Cross cut

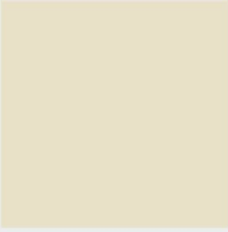
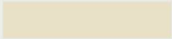
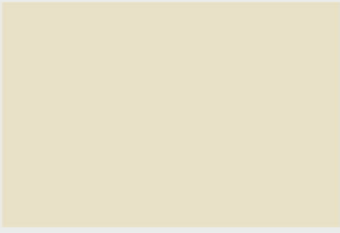
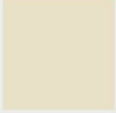
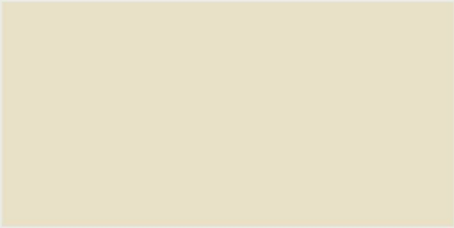


COLOR	GRAIN	FRACTURES	STRUCTURE	PORES	CAVITY	MACROFOSSILS	VEINS
Hazelnut / Walnut	Medium / Fine	Absent	Regular superficial holes	Few irregularly shaped pores	Rare	Absent	Regular light pattern



# LUPI PIETRE

## TILES AND SLABS

Our formats are versatile, perfect for both wall cladding and flooring, making them ideal for creating innovative and exclusive indoor and outdoor environments. The various cuts are designed to meet all project requirements.

	122x122x2 cm 48"x48"x¾"		20,3x91,5x1,3 o 2 cm 8"x36"x½" o ¾"
	122x183x2 cm 48"x72"x¾"		61x61x1,3 o 2 cm 24"x24"x½" or ¾"
	122x244x2 cm 48"x96"x¾"		61x91,5x1,3 o 2 cm 24"x36"x½" or ¾"
			61x122x1,3 o 2 cm 24"x48"x½" or ¾"

**FINISHES** Open pore honed - Polished - Bush-hammered - Sandblasted - Brushed

**FILLING** Cement - Mastic - Resin - Open pore

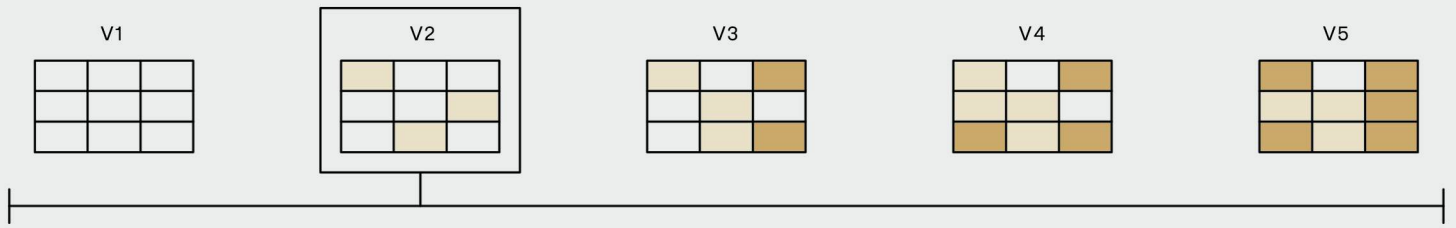
## DATA SHEET

NORM	DESCRIPTION	VALUE	UM
UNI EN 1926	Breaking load perpendicular to the plane	41	Mpa
UNI EN 1926	Breaking load parallel to the plane	87	Mpa
UNI EN 12372	Resistance to perpendicular bending	14	Mpa
UNI EN 1936	Apparent volumetric mass	2.600	Kg/Mc
UNI EN 1936	Real volumetric mass	2.670	Kg/Mc
UNI EN 1936	Porosity	2,2	%
UNI EN 13755	Water absorption	1,3	%
UNI EN 12524	Project thermal conductivity	1,8	W/(m*K)
UNI EN 12524	Dry fiel water vapor resistance factor	200	μ
UNI EN 12524	Humid fiel water vapor resistance factor	150	μ
UNI EN 1341-14157	Abrasion resistance	2,8	mm
UNI EN 1341-14231	Slip resistance	79	USRV



# LUPI PIETRE

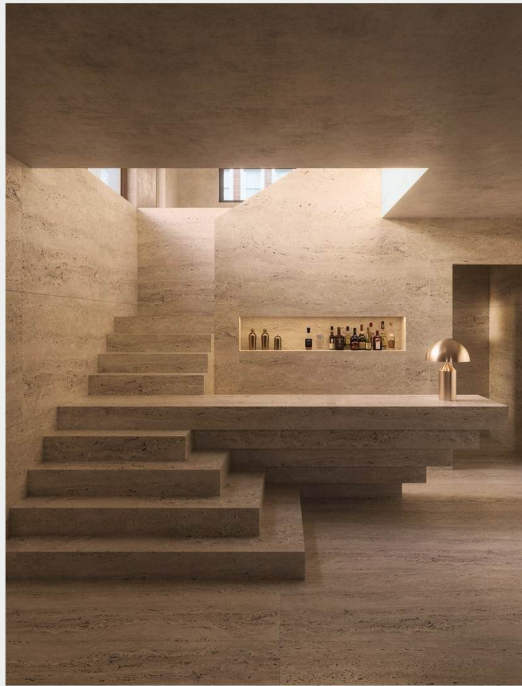
## COLOR / CROMATICI VARIATIONS



## APPLICATIONS

### EXTERIOR FLOORING AND CLADDING

Travertine is one of the oldest materials used in construction industry, long favored for its durability in exterior flooring and cladding. It excels in resisting weather conditions, thermal fluctuations, and is frost-resistant. These natural properties make it an ideal and long-lasting choice for outdoor use. With the right finishes and treatments, travertine can offer waterproofing and slip-resistant qualities, which are essential for exterior surfaces. When used in cladding and facade systems, travertine ensures wear resistance and durability against the atmospheric agents, while keeping maintenance costs low. Additionally, its inherent elegance enhances architectural designs, adding a unique touch.



### INTERIOR FLOORING AND CLADDING

Travertine is also an ideal solution for interior flooring and cladding. The natural quality of the material, combined with the choice of cut - either vein-cut or cross-cut - creates distinctive patterns with textures that make each surface unique. Its warm and neutral colors suit any interior design, providing a timeless and versatile base. By varying the finishes, from glossy to matte, different lighting effects and intensities can be achieved, adding to the material's versatility and visual appeal.

